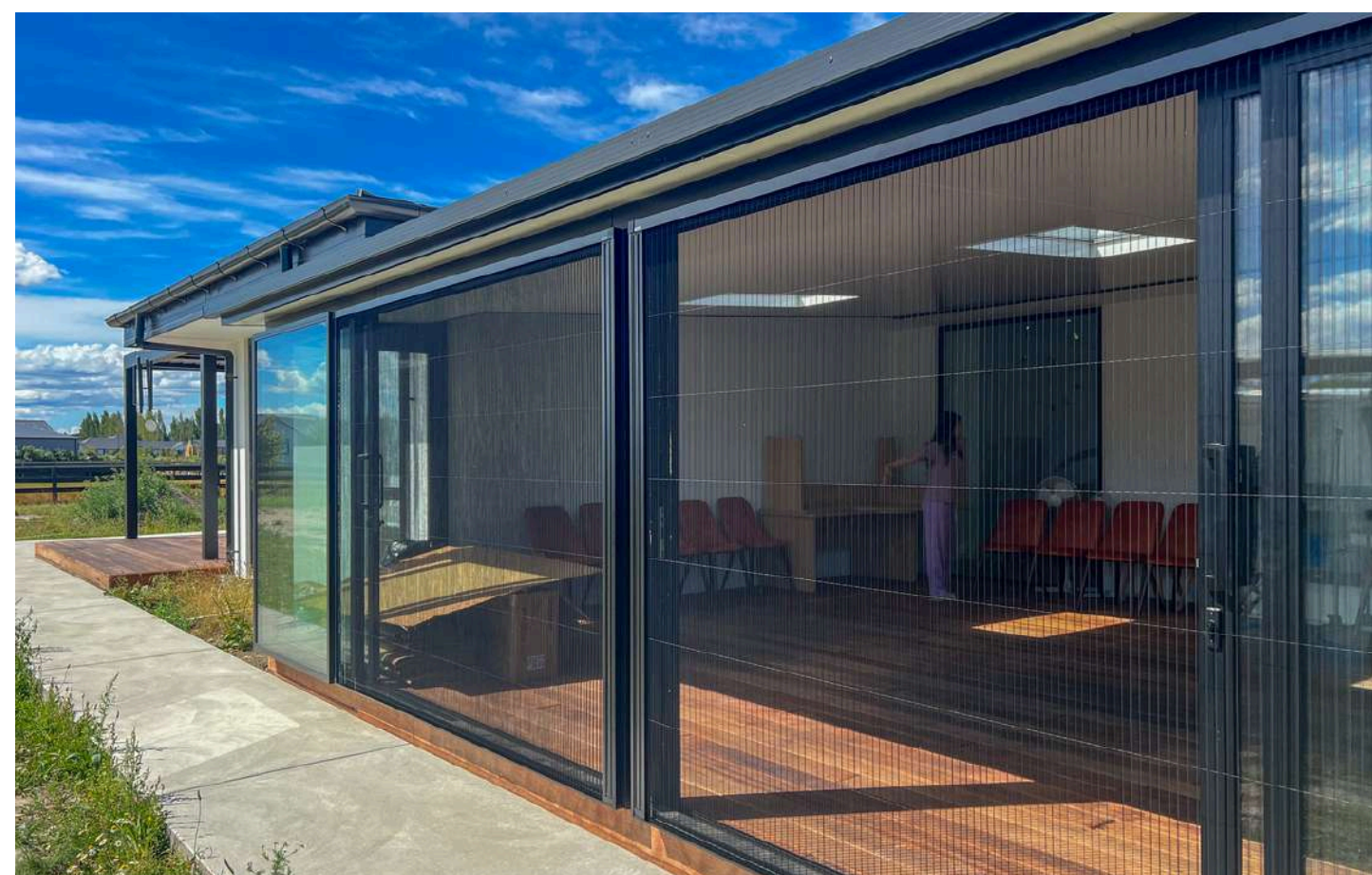


WINDOWART

How to Install

For Fly-screen(Pleated Style)



- **Assembling the Insect Screen Frame**

Check 1

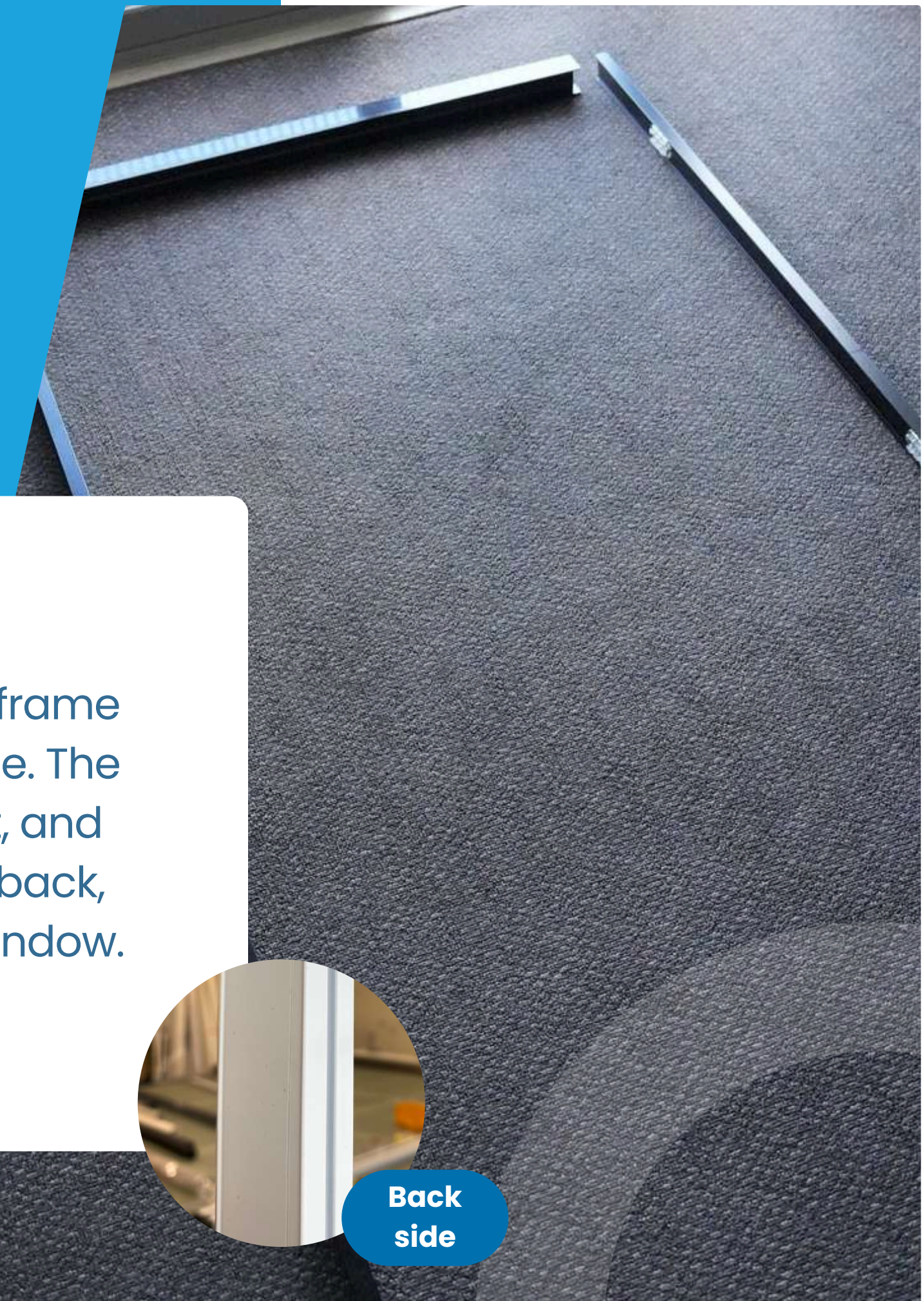
You can use either side of the aluminum frame for the top and bottom rails.

Check 2

The two side aluminum frame has a front and back side. The smooth side is the front, and the grooved side is the back, which attaches to the window.



**Back
side**



- **Installing the Assembled Frame**

Check

Place the assembled insect screen frame onto the intended door frame(or window frame) and secure it.



- **Checking the Direction of the Screen part**

Check

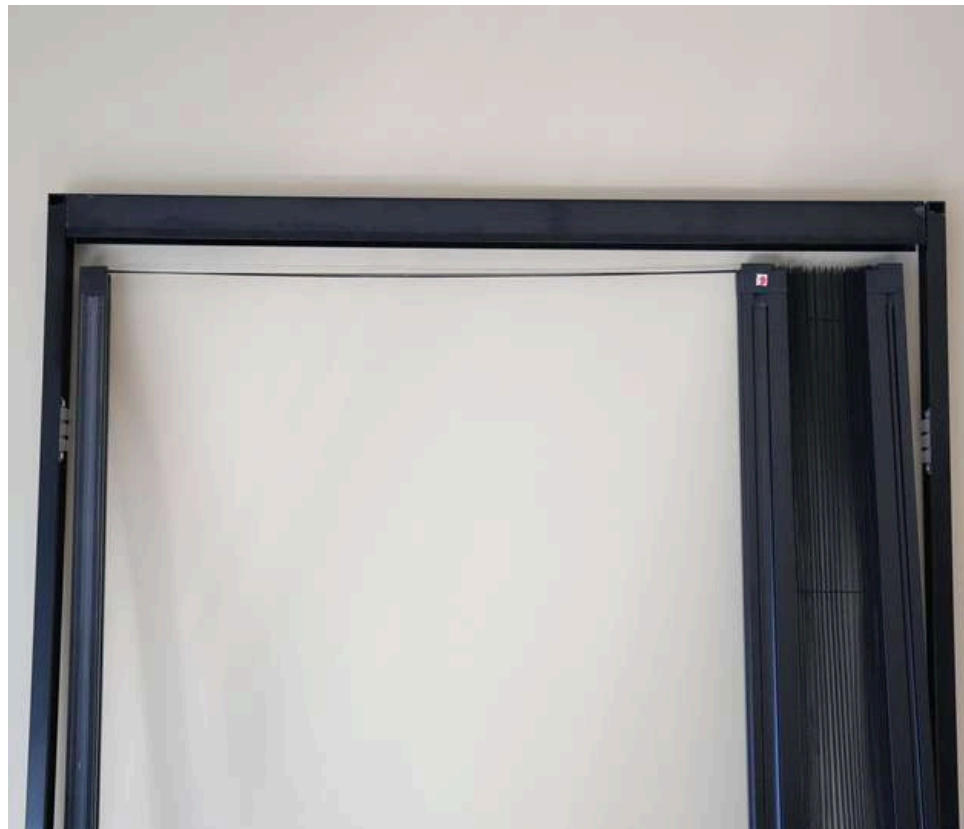
Confirm the top, bottom, front, and back side of the insect screen before installation.



• Checking the Strings

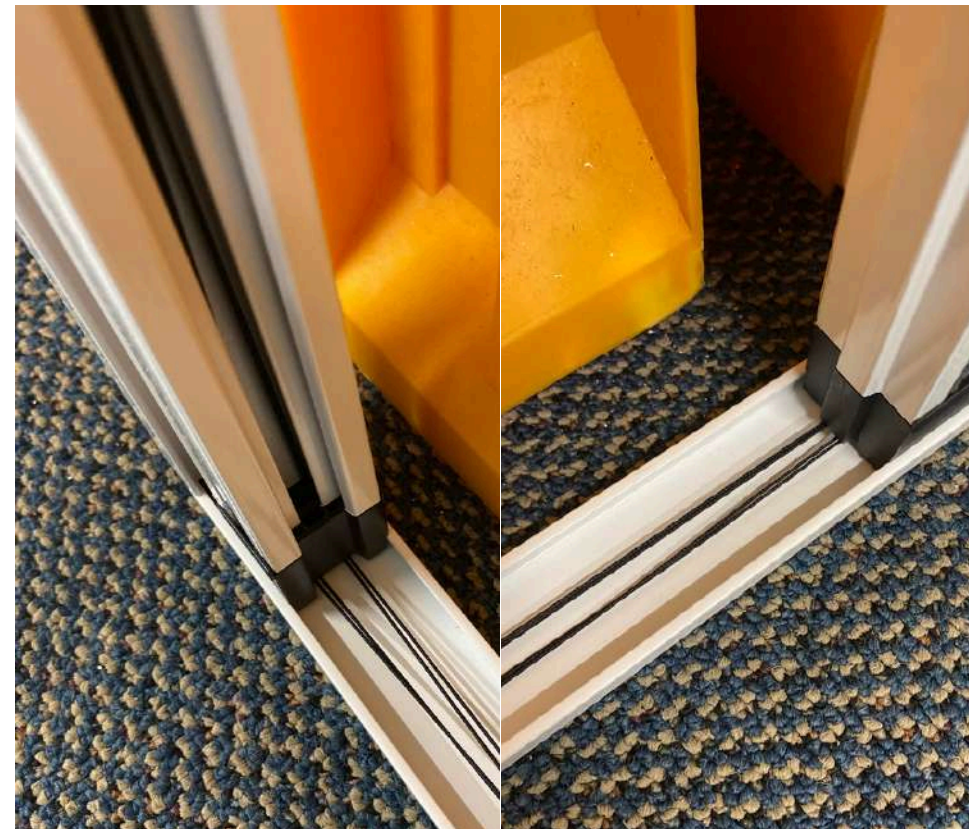
Check 01

Place the aluminum frame with the mesh opening side and the magnetic side facing outward.



Check 02

Ensure the four strings are divided into two sets, running parallel to each other.
(4 strings each side top & bottom)



Check 03

Check that the strings are properly aligned in the middle before securing the aluminum frame.



- **Ensuring Proper Installation**

Check

Verify that the insect screen is correctly aligned and securely placed within the rails.



Aluminum
Flame side

Aluminum
Screen side

- **Operating the screen**

Check

**Open and close the door several times
to help the strings and mesh
settle into position.**

***Forcing the door open or closed with tangled strings may cause the strings to snap.**

***Ensure that the four strings at the top and bottom
are divided into two parallel sets before use.**



• Regular Maintenance

Check 1

Once a month, spray silicone lubricant on the top and bottom rails.

Check 2

Regularly clean dust from the bottom rail to ensure smooth operation.

Check 2

If the mesh becomes creased, restore it to its original shape as soon as possible. Prolonged creasing may result in permanent deformation of the material.



WINDOWART

THANK YOU!

Thank you for choosing us.



021 0243 0664



www.windowart.co.nz



9/40 Hayton Road, Wigram,
Christchurch, 8042