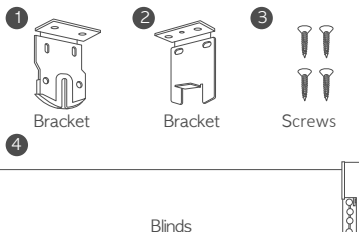


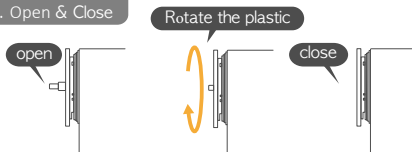
# MANUAL

## Package Included



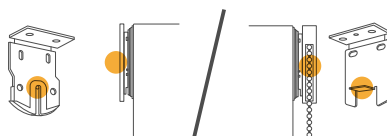
## Install Guide

### 1. Open & Close



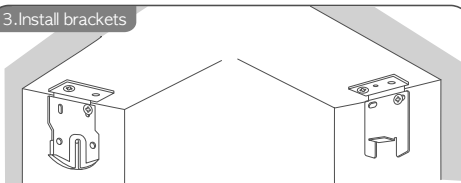
Check the blinds open & close  
If one side of the blind is open as shown in the picture, turn the plastic to move the pin inward.

### 2. Checking components



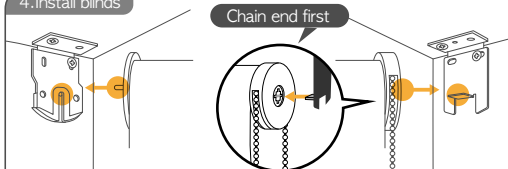
Both brackets are slightly different so check which side it fits on before installing brackets to the wall.

### 3. Install brackets



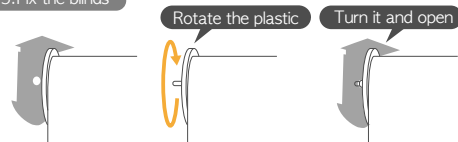
Mark the bracket locations and fix in place, typically about 10-20mm in from the front edge of the window frame.

### 4. Install blinds



Make sure you secure the chain end first.

### 5. Fix the blinds



Turn the plastic disc to release the pin so that it clicks into the pin end bracket.

### \* Outside fitting

When installed outside the window frame

